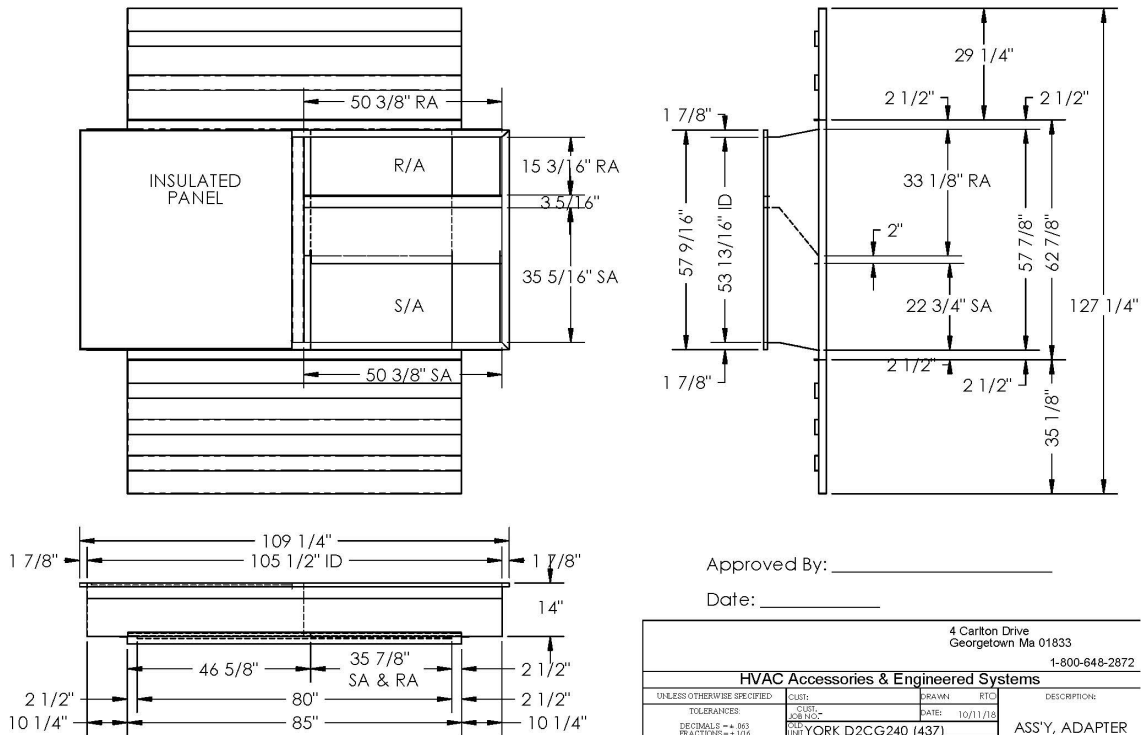


# Cambridgeport

## SUBMITTAL

**Part Number**  
**2015226**

SUBMITTED TO \_\_\_\_\_  
 COMPANY \_\_\_\_\_  
 JOB NAME \_\_\_\_\_  
 EQUIPMENT \_\_\_\_\_  
 SIGNATURE \_\_\_\_\_  
 DATE \_\_\_\_\_



**MATERIAL: 18GA,(0.0516) 340.5 LBS.**

### FEATURES

- ONE PIECE WELDED CONSTRUCTION
- FACTORY INSTALLED SUPPLY TRANSITIONS
- FULLY INSULATED
- DESIGNED FOR EVEN WEIGHT DISTRIBUTION
- FABRICATED OF HEAVY GAUGE G90 GALVANIZED STEEL
- ALL WELDS SPRAYED WITH GALVANIZING COMPOUND
- GASKET PROVIDED FOR UNIT TO ADAPTER SEALING

Approved By: \_\_\_\_\_

Date: \_\_\_\_\_

4 Carleton Drive Georgetown Ma 01833 1-800-648-2872			
<b>HVAC Accessories &amp; Engineered Systems</b>			
UNLESS OTHERWISE SPECIFIED:	CUST. _____	DRAWN _____	DATE: 10/11/18
TOLERANCES:	CUST. _____	DATE: _____	DESCRIPTION: ASS'Y, ADAPTER
DECIMALS = + .003	YORK D2CG240 (437)		
FRACTIONS = + 1/16	NEW CARRIER 48TCED16 (74A)		
ANGLES = + 1°			
MATERIAL CONDITIONS:	SUBMITTAL: 45894		
REMOVE ALL BURRS & SHARP EDGES:	DETAIL OF 2015226	SHEET 1 OF 1	PART NO. 2015226
ALL DIMENSIONS ARE O.D.			REV.

**CAMBRIDGEPORT STRONGLY RECOMMENDS CONFIRMING THE DIMENSIONS ON THIS SUBMITTAL**

CURB ADAPTERS ARE BASED ON UNIT MANUFACTURERS STANDARD CURB DIMENSIONS.  
 CAMBRIDGEPORT CANNOT BE RESPONSIBLE FOR ANY DEVIATIONS FROM FACTORY DIMENSIONS OR INCORRECT MODEL NUMBERS.